

Solera Networks
Deep Packet
Capture Appliances



The Solera Virtual CALEA Appliance is powerful, yet simple solution for ISPs and VoIP providers who need to comply with CALEA (Communications Assistance for Law Enforcement Act)* regulations. It provides the same deep packet capture and stream-to-storage capabilities of the Solera Networks CALEA Appliance with the flexibility to deploy on any hardware platform.

Virtual CALEA
Appliance

CAPTURE RATE:

100 Mbps

STORAGE CAPACITY:

300 GB (recognized storage)

**WEB BASED MANAGEMENT
CONSOLE**

**COMPLETE PACKET CAPTURE AND
STORAGE**

Includes header and payload

CUSTOM FILTERING

Ingress and Egress

NETWORK TOOL SUPPORT:

Support for all commercial, custom or open source network security and analysis tools

SYSTEM REQUIREMENTS:

2 GB of RAM
350 GB of available storage
2.0 GHz processor speed (or above)

SUPPORTED VMWARE VERSIONS:

- VMware Server 1.0.3
- VMware Workstation 6 (or above)
- VMware Player 2.0 (or above)

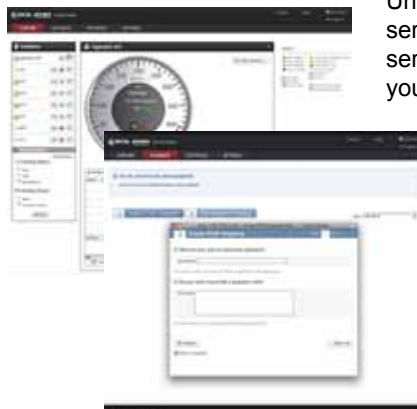
EASY CALEA COMPLIANCE IN A VIRTUAL APPLIANCE

The Solera Virtual CALEA Appliance is the industry's first and only CALEA appliance available as a VMware™ image. It includes the same capabilities as the CALEA Appliance creating a complete record of network traffic (header and payload) and provides filtering and playback for easy delivery of information to law enforcement agencies (LEAs) as specified in a warrant. It also provides the flexibility to deploy on any hardware platform.



The Virtual CALEA Appliance:

- Provides ISP interceptor capability
- Supports CMII packet annotation and forwarding
- Provides continuous packet capture with dynamic tap filtering capability
- Provides TAP forwarding of captured data to LEAs via TCP/IP
- Creates historical views of all network traffic
- Delivers positive ROI as a dual purpose device that also protects your own network while waiting for a lawful intercept request
- Can be deployed on any hardware platform that supports VMWare



Simple web-based management

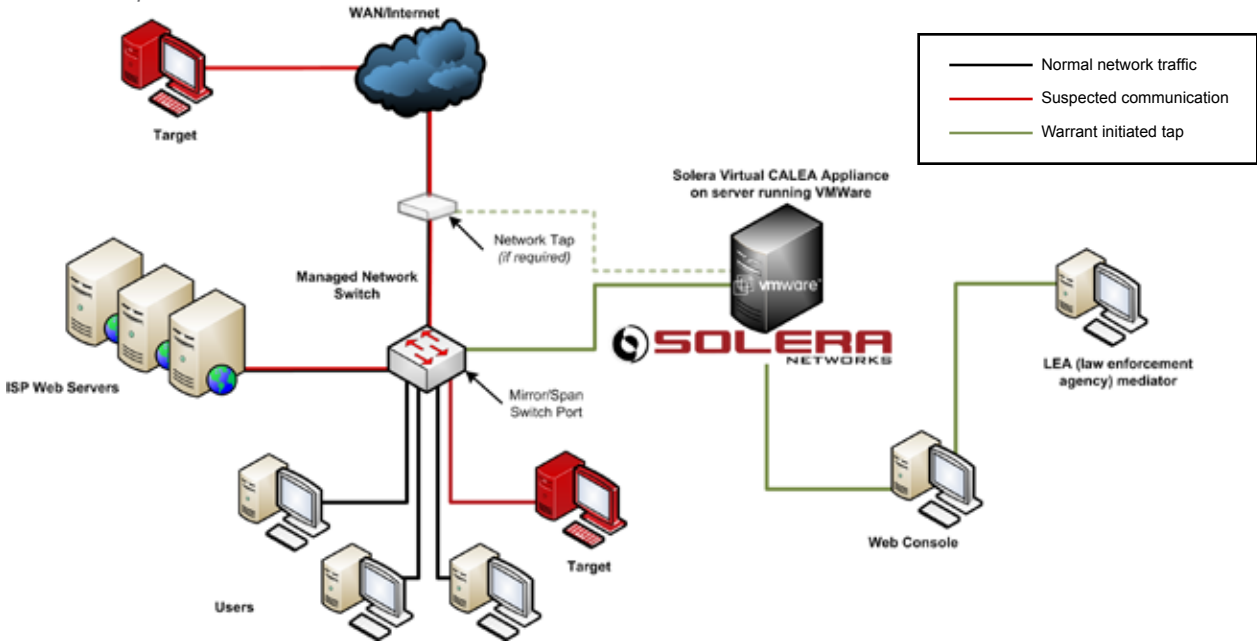
Unlike other restrictive CALEA products or services, the Solera Virtual CALEA Appliance serves a dual purpose and a positive ROI for your investment. While waiting for a warrant, the Virtual CALEA Appliance can be used to capture and store a record of network traffic to analyze using any number of commercial, open source, or custom analysis and forensic tools. With this historical record you can simplify network management by uncovering slow performing segments, strengthen network security by quickly identifying breaches or slow hacks, and perform ongoing forensics/analytics to keep the network in optimal condition.

Having a complete, lossless record of your data in motion is the key to protecting your company and your employees.

SOLERA NETWORKS—SEE EVERYTHING. KNOW EVERYTHING.

* Supports ATIS-10000013.2007 Standard and T1.IAS

Sample network implementation



BENEFITS OF A SOLERA NETWORKS SOLUTION

IMPROVE NETWORK SECURITY

Network administrators now have comprehensive evidence to better protect against intruders, data leakage, and internal misuse.

OPTIMIZE NETWORK PERFORMANCE

Solera Networks appliances provide a complete network record to replay without affecting the production network, allowing detailed analysis to uncover areas of the network that need attention.

MAXIMIZE ROI

Competitive pricing and various deployment options allow organizations of all sizes to benefit from deep packet capture and analysis to improve network performance and security.

INCREASE OPTIONS

Solera DS appliances work with hundreds of commercial, custom and open source management, analysis and forensic tools to monitor, manage and secure the network.

ROOT CAUSE DISCOVERY FOR:

NETWORK SECURITY

- Fortify IDS/IPS toolsets
- Enforce network policies
- Identify & record data leakage

NETWORK MANAGEMENT

- Reduce time to resolution
- Analyze all your traffic
- Reduce inline risk

LAWFUL INTERCEPT

- Zero network impact
- Plug and play compliance
- Compatible with any LEA request

FORENSICS/ANALYTICS

- See everything, record everything, and playback everything on the network.

IMPORTANT: SOLERA NETWORKS, INC. IS NOT RESPONSIBLE FOR YOUR ORGANIZATION'S COMPLIANCE WITH CALEA. SOLERA NETWORKS, INC. WILL NOT PAY ANY FEES, FINES, OR OTHER COSTS ASSOCIATED WITH YOUR COMPLIANCE EFFORTS. THE INFORMATION HERE IS PROVIDED "AS-IS" AND DOES NOT CONSTITUTE LEGAL ADVICE. INTERESTED PARTIES SHOULD SEEK INDEPENDENT LEGAL COUNSEL WHEN REVIEWING ANY PROGRAM OR PLAN THAT IS DESIGNED TO PROVIDE COMPLIANCE WITH CALEA

Contact Solera Networks to see how comprehensive packet capture and playback will make your company more aware, more compliant and more secure. A trial version of the Virtual Appliance is available at:

www.soleranetworks.com/trial

© 2009 Solera Networks. All rights reserved. Solera Networks, Solera DS Series, DeepSee, Solera V2P Tap, DS 1150, DS 3150, DS 5150, and See everything. Know everything. are registered trademarks of Solera Networks. All other company names, brand names and product names are the property and/or trademarks of their respective companies.

Solera Networks Headquarters
 10713 South Jordan Gateway, Ste. 100
 South Jordan, Utah 84095
 1 877-5SOLERA (877-576-5372)
 1+ 801-545-4100 • 1+ 801-545-4040 fax
 Email: info@soleranetworks.com

Solera Networks Japan, Inc.
 Shinjuku Park Tower N30F
 3-7-1, Nishi-Shinjuku
 Shinjuku-ku, Tokyo 163-1030
 1+ 81-3-5326-3367 • 1+ 81-3-5326-3001 fax
 Email: info@soleranetworks.co.jp

